

netforms

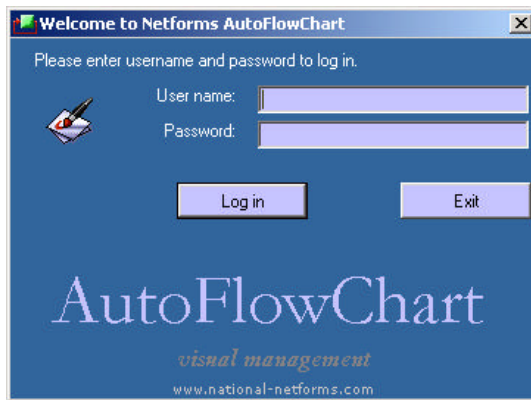
Visual Management Systems

# AutoFlowChart

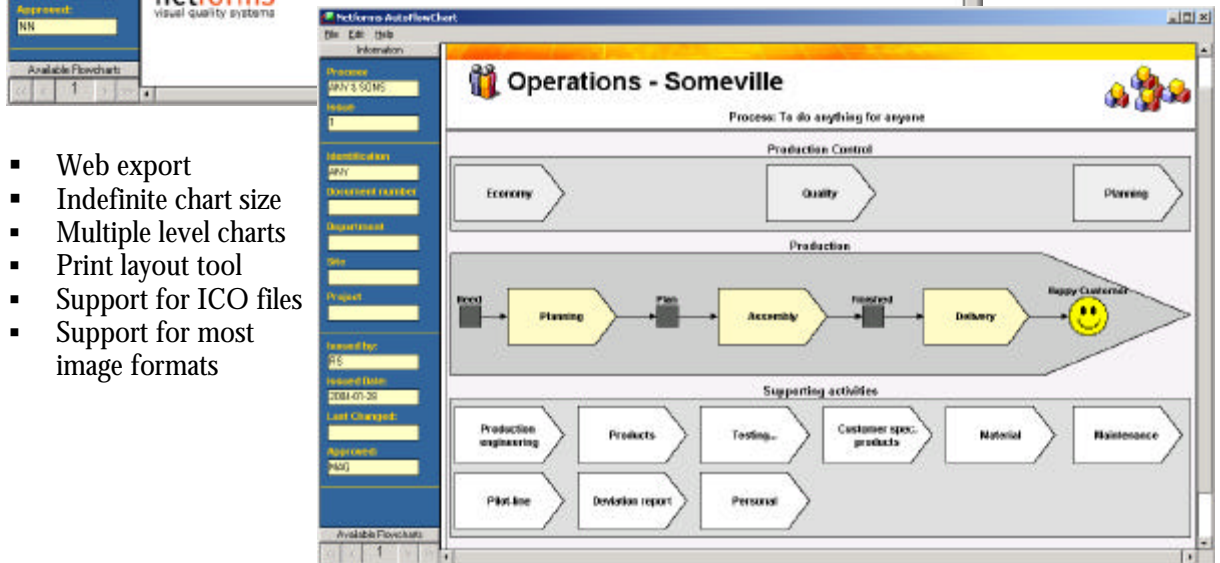
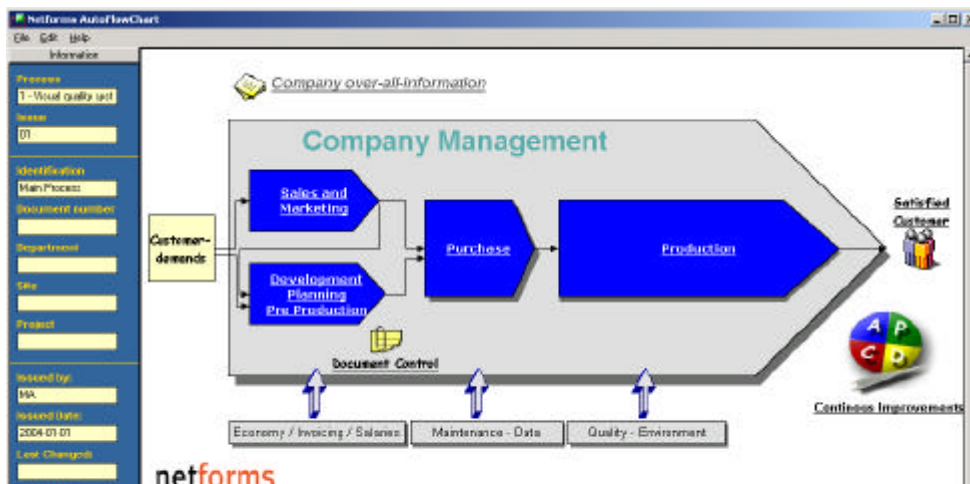
Streamline your quality work with predefined templates. Less effort more possibilities!

**AutoFlowChart is a powerful program with many ready to use templates**

- Multilevel flowcharts
- One or more links from each object
- Multiple issue handling of documents
- Available for everybody
- Security settings at user level
- User friendly – easy to learn
- Web compatible
- One site – one license



**AutoFlowChart** lets you create different types of flowcharts and then connect them to each other building a multi level system. Each object in a flowchart can contain one or more connected documents of any format. Users can then be granted different rights depending on individual needs and then navigate through the system by just clicking an object to find the required document. **AutoFlowChart is a true visual management system!**



- Web export
- Indefinite chart size
- Multiple level charts
- Print layout tool
- Support for ICO files
- Support for most image formats

**Streamline your quality system with Netforms AutoFlowChart!  
Less effort - More possibilities with ready to use templates!**

# Visual Management

**Visualize your processes and make ISO 9001 comprehensible to all employees!**

Develop, visualize or renew your company's management system. **AutoFlowChart** is the perfect tool for almost every company and any standard. **AutoFlowChart** makes the different processes understandable and the users will easily learn to navigate in the system. Make documents like policies, goals, instructions, images, routines etc. accessible just by a mouse click.

The screenshot displays the Netforms AutoFlowChart software interface. The main window shows a flowchart for a 'Verification' process. The flow starts at 'Start', goes to 'Verification', then to a decision diamond 'OK?'. If 'No', it goes to 'Issuing an 80 report', then 'Stopped', and finally 'Mark this goods with a red tag'. If 'Yes', it goes to 'Marking', then 'Transport', and finally 'Archive'. There are also icons for 'Supplier', 'Instructions', and 'Continuous Improvements'.

A 'Documents' window is open, showing a list of documents:

Document	Path	Menu name	Object	Flowchart
APCexample.doc	C:\af99	Fam # 1	Forms	Purchasing
APCexample.doc	C:\af99	Fam # 2	Forms	Purchasing
APCexample.doc	C:\af99	Purchasing policy	Policy	Purchasing
B7-2_6.xls	C:\af99	Grundläggande krav ...	Supplier demands	Purchasing
M7-2.doc	C:\af99	Val av leverantör	Supplier demands	Purchasing
I7-2_2.xls	C:\af99	Instruktion för regist...	Supplier demands	Purchasing

Below the documents window, there is a 'Built-in document tracer' window showing a legend for 'Order forms handling':

- Original: Customer
- Blue copy: Customer order
- Yellow copy: Outgoing goods
- Red copy: To the foreman
- Delivery note: Follow the goods

## Flexible and user friendly

**AutoFlowChart** is easy to use and very user friendly. The deployment in an organisation is fast and effortless and will save time and save money by keeping the educational costs at a minimum. AutoFlowChart also has a built-in issue handling option that lets you create new document issues and at the same time keeping the obsolete documents accessible to the administrators.

**AutoFlowChart** makes it easier to communicate internally and with suppliers and customers. Use the predefined templates or design your own system for quality, environment, plant layout, organisation charts, computer network or use it to visualize anything you like.

forms the future™



National Netforms AB  
 Krontorpsvägen 14 - 302 65 Halmstad  
 Tel.+46 35-18 28 38 - Fax +46 35-407 61  
 info@national-netforms.com  
 www.national-netforms.com

